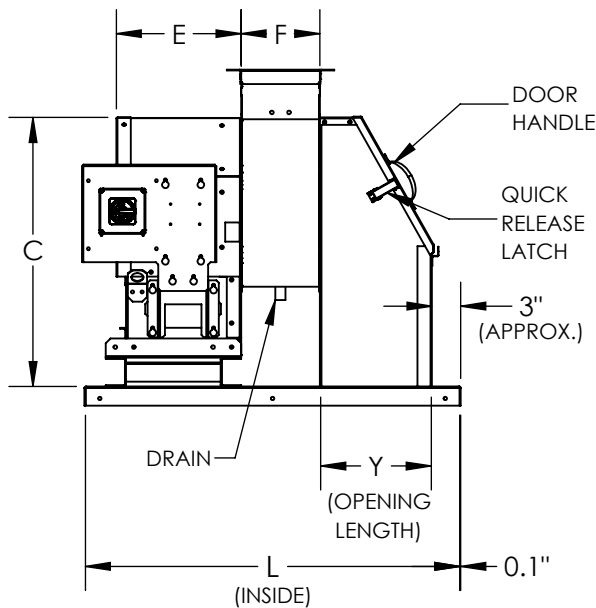


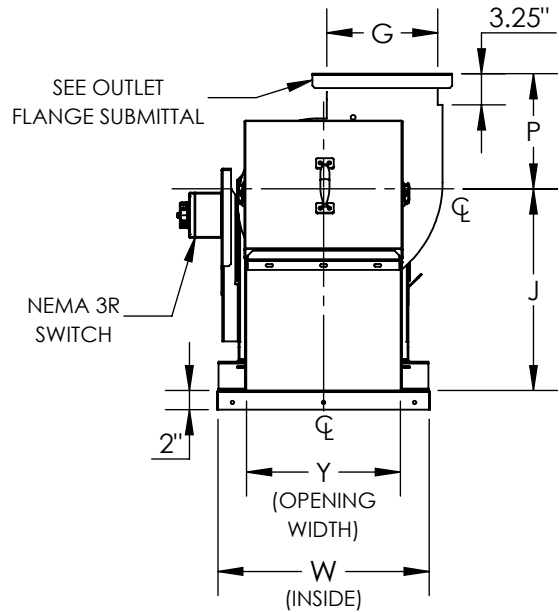


DATE: TAG:  
 JOB:  
 PROJECT:  
 COMPANY:  
 SALES PERSON:

UVS2, CLASS-1, ARRANGEMENT-4  
 INLET BOX AND CURB CAP FOR UL RESTAURANT GREASE EXHAUST



**DRIVE SIDE VIEW**



**INLET VIEW**

**STANDARD CONSTRUCTION:**

1. Discharge: UB
2. Rotation: CW/CCW (CW shown above)
3. Steel Wheel
4. Welded and Coated Housing, Bolted and Galvanized Pedestal
5. Welded and Coated Inlet Box and Curb Cap
6. Weather Cover
7. Access Door (Bolted or Hinged)
8. Housing drain and plug - 3/4" NPT
9. Pre-wired switch NEMA 3R
10. Flanged Outlet
11. Shaft Seal (Ceramic)
12. High Temperature Paint

**OPTIONAL ACCESSORIES:**

1. Speed Controllers (shipped loose only)
2. Grease Containment with optional Absorbent
3. Curb
4. Outlet Stack

**DIMENSIONAL DATA**

SIZE	C	E	F			G	J	L	P	W	X	Y	MAX. WT. (lbs)	MAX. RPM	MAX. MTR
			100% W	80% W	50% W										
60	28.00	13.00	8.19	-	-	11.56	21.00	39.00	12.00	22.00	11.50	16.00	169	4400	145T
70	28.00	13.00	8.19	-	-	11.56	21.00	39.00	12.00	22.00	11.50	16.00	169	4400	145T
80	28.00	13.00	8.19	-	-	11.56	21.00	39.00	12.00	22.00	11.50	16.00	169	4400	145T
105	28.00	13.00	8.19	-	-	11.56	21.00	39.00	12.00	22.00	11.50	16.00	169	4400	145T
122	29.38	15.94	9.88	9.25	-	13.06	21.00	42.00	13.50	25.00	13.00	19.00	205	3550	182T
135	30.25	15.94	10.88	10.19	-	14.38	21.38	44.00	14.25	28.00	13.00	22.00	229	3222	182T
150	32.63	15.91	12.06	11.31	-	15.88	23.00	46.00	14.75	30.00	13.00	24.00	259	2900	184T
165	35.13	18.00	13.25	12.44	-	17.56	24.63	50.00	14.75	33.00	16.00	27.00	307	2636	213T
182	38.13	20.44	14.06	13.06	11.63	20.06	26.63	53.00	15.00	35.00	17.50	29.00	348	2300	213T
200	41.44	20.44	15.38	14.38	12.75	22.00	28.75	57.00	16.25	38.00	20.50	32.00	444	2100	213T
222	45.00	20.44	17.13	16.00	14.13	24.50	31.25	63.00	18.00	42.00	22.00	36.00	548	1888	215T
245	48.50	23.19	18.75	17.50	15.63	27.00	33.75	67.00	19.75	45.00	24.00	39.00	652	1714	254T
270	52.63	23.19	20.63	19.38	17.13	29.75	36.75	70.00	21.75	48.00	22.50	42.00	746	1556	254T

ALL DIMENSIONS ARE IN INCHES, WEIGHTS ARE APPROXIMATE AND DOES NOT INCLUDE DRIVES OR ACCESSORIES.

REVISION: FORM: REPLACES: